

Barrier[®] Glider Cold Storage Doors

Barrier Glider is your best value in cold storage doors.



The Barrier Glider Cold Storage Door from Rite-Hite Doors improves the technology of traditional cold storage doors to deliver more value at cold storage openings.

Iso-Tek[®] panel construction is combined with the Thermal Air[™] Sealing System to help you achieve superior environmental separation at your opening with lower energy costs.

Flexible Iso-Tek[®] panels deliver superior environmental separation and increased impactability.

Simple, straightforward design provides long-term performance.

High speed operation maximizes the time the door is closed to help reduce energy costs.

Superior seal of the opening maintains environmental separation with the unique Thermal Air[™] Sealing System.

Energy efficient design reduces heat gain into cold storage areas, lowers energy costs.

Panels seal tight against wall, yet release upon impact with unique panel retention system.

Thermal Air[™] sealing system helps eliminate hazardous, high maintenance heat trace wires.

Specifications

Speed

- » **Opening:** up to 60" per second (1.52 m/s)
- » **Closing:** 30" per second (0.76 m/s)

Size

- » **Minimum** – 7' w x 8' h (2135 mm x 2440 mm)
- » **Maximum** – 10' w x 16' h (3048 mm x 4267 mm)
(Up to 18' h (5486 mm) if width is 8' (2438 mm) or less and includes dual blower Thermal Air™ seal system).
Optional single slide panel available.

Temperature range

-20° to +120° F (-29° to 49° C)

Panel design

Flexible, impactable R-10 panels are 3" (76 mm) thick with insulating foam core. Panels covered with 30 oz. gray (optional white panels) polyurethane fabric. Optional 4-pane vision panels are 14" x 32" (355 mm x 812 mm). Panel retention system keeps panels tight against seals, yet allows panels to swing away from the wall upon impact and automatically reset.

Thermal Air™ sealing system

Blower system and wall-mounted 4 1/2" (114 mm) diameter fabric tube seals around door perimeter constantly circulate warm air. Heated flexible bottom seal. Thick, insulated nose seal. Dual blower system available for larger door sizes.

Header/trolley assembly

Track constructed of heavy gauge round tubing to provide large wear surface for the trolley's urethane rollers. Hourglass-shaped rollers allow panel to rotate on the track for enhanced panel impactability. Self-supporting on two floor mounted beams constructed of 1" x 3" (25 mm x 76 mm) 11 ga steel tubing.

Drive system

1 HP AC motor with a power on brake. The beveled gearbox can be back driven in the event of a power outage, which will disengage the brake, and allow the panels to be manually opened and closed.

Electrical requirements

- » **Single-Phase** – 220V-240V
- » **Three-Phase** – 208V, 230V, 400V, 460V, 575V

Control box

The i-COMM™ II Digital Controller, displaying real-time door status with variable frequency drive. The NEMA 4X box is prewired with external connections brought into pre-coded terminals. Available remote mount controls.

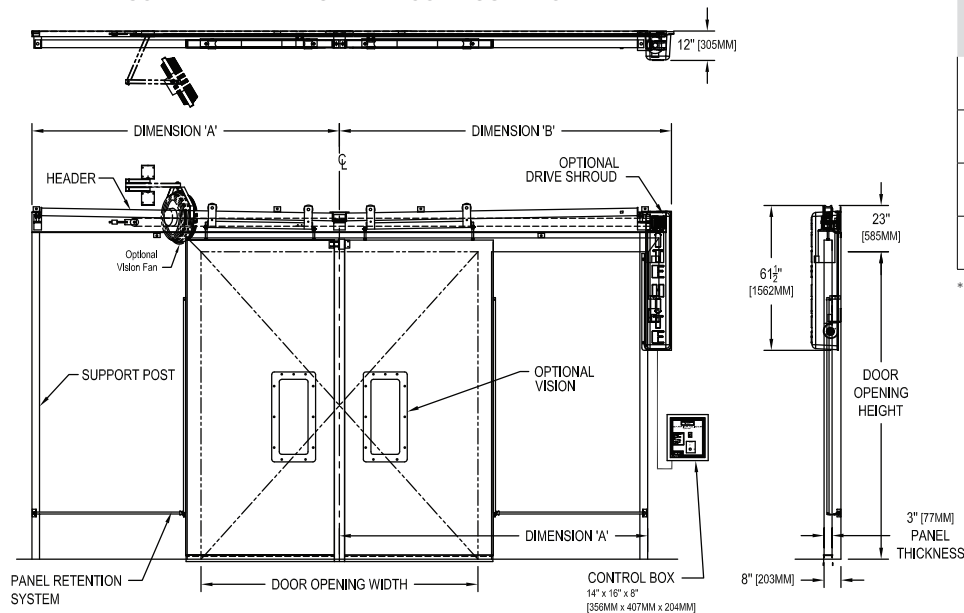
Safety features

Quick operation helps prevent impact. Flexible panels, panel retention system and tubular track/roller system help prevent impact damage. Automatic reversing when obstruction is encountered in opening, without use of reversing edge. Optional vision panels.

Warranty

Limited 1-year parts and labor, including electrical. Rite-Hite Doors also offers an exclusive 1-year customer satisfaction money-back guarantee.

FLEXIBLE ISO-TEK® BI-PARTING PANEL CONFIGURATION



Door Width	Dim. "A"	Dim. "B"
7'0" (2133 mm)	96" (2438 mm)	105.5" (2680 mm)
8'0" (2438 mm)	108" (2744 mm)	117.5" (2985 mm)
9'0" (2743 mm)	120" (3048 mm)	129.5" (3290 mm)
10'0" (3048 mm)	132" (3353 mm)	141.5" (3595 mm)

*Note: Dimensions based on right-hand motor location. Left-hand motor location is opposite.



D19BGSS0415H1

8900 North Arbon Drive
Milwaukee, WI 53223, USA

P 414-355-2600 (800-456-0600)

F 414-355-9248

Rite-Hite®, Barrier®, Iso-Tek®, Thermal Air™, i-COMM™ are trademarks of the RITE-HITE Holding Corporation. RITE-HITE products may be covered by one or more U.S. Patents with other U.S. and foreign patents pending. RITE-HITE reserves the right to make product improvements without prior notice.

www.ritehite.com